

1. Use the heat load calculators to size a cooling system for your glass cabinet or room

Glass Wine Cabinet Heat Load Calculator (all glass walls)

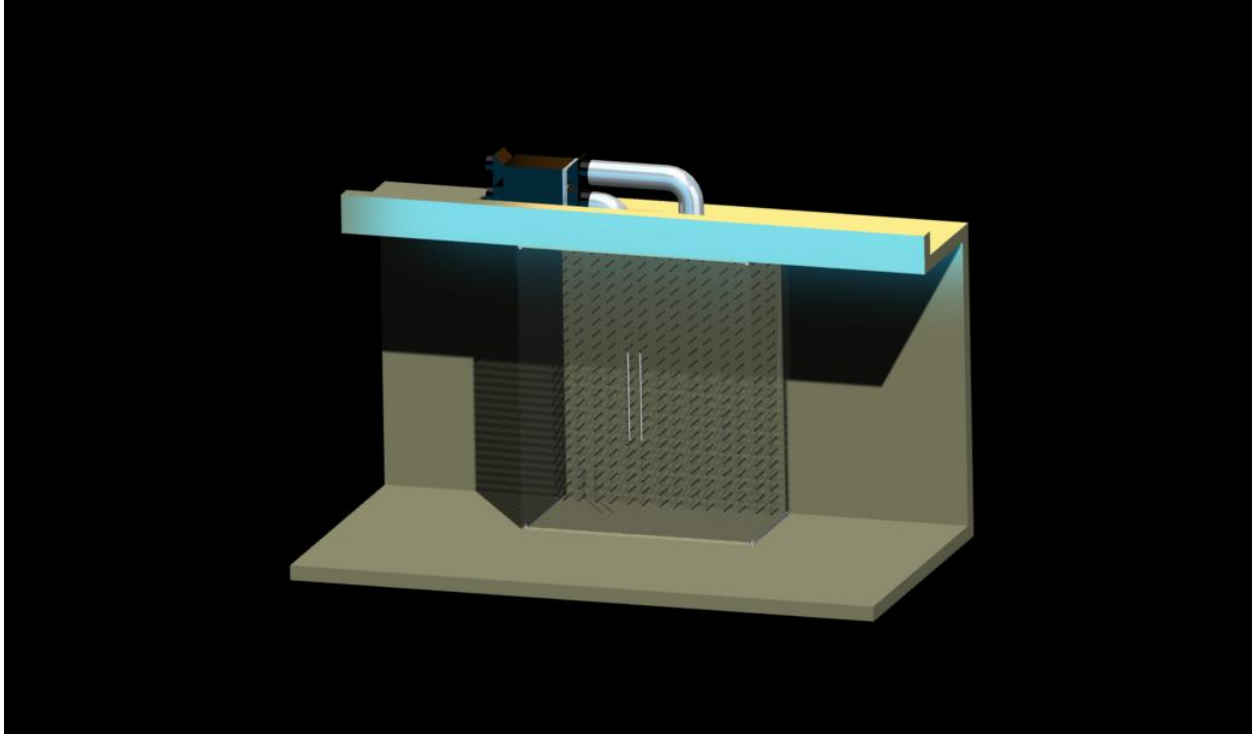
Number of Doors:	<input type="text"/>
Door Width (in, each):	<input type="text"/>
Door Height (in, each):	<input type="text"/>
Cabinet Width (in):	<input type="text"/>
Cabinet Depth (in):	<input type="text"/>
Cabinet Height (in):	<input type="text"/>
Pane of Glass:	<input type="text"/>
Ambient Temperature (°F):	<input type="text"/>
Wine Cabinet Temperature (°F):	<input type="text"/>
Exhaust Space Temperature (°F):	<input type="text"/>
	<input type="button" value="Calculate"/>
Self-Contained Cooling Capacity (BTU/h at Cabinet Temperature):	<input type="text"/>
Split Cooling Capacity (BTU/h at Cabinet Temperature):	<input type="text"/>

Glass Wine Room Heat Load Calculator (solid back wall)

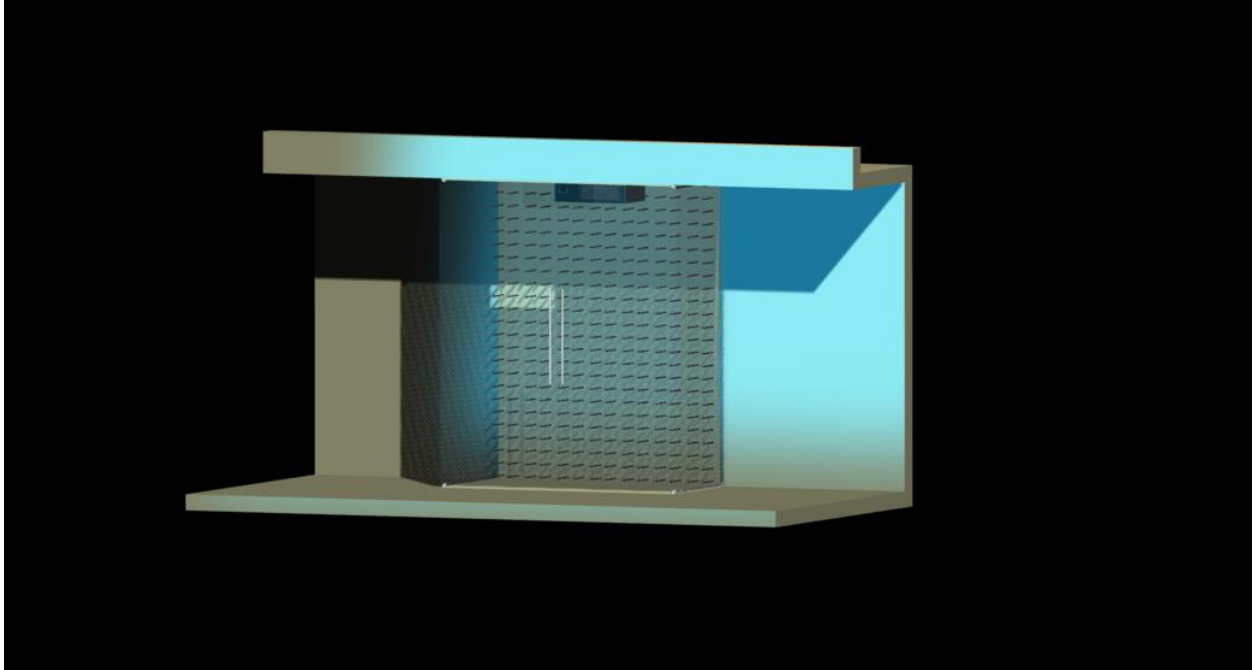
Number of Doors:	<input type="text"/>
Door Width (in, each):	<input type="text"/>
Door Height (in, each):	<input type="text"/>
Room Width (in):	<input type="text"/>
Room Depth (in):	<input type="text"/>
Room Height (in):	<input type="text"/>
Pane of Glass:	<input type="text"/>
Ambient Temperature (°F):	<input type="text"/>
Wine Room Temperature (°F):	<input type="text"/>
Exhaust Space Temperature (°F):	<input type="text"/>
Back Insulation R Value (#°F hr Btu):	<input type="text"/>
Ceiling Insulation R Value (#°F hr Btu):	<input type="text"/>
Floor Insulation R Value (#°F hr Btu):	<input type="text"/>
	<input type="button" value="Calculate"/>
Self-Contained Cooling Capacity (BTU/h at Room Temperature):	<input type="text"/>
Split Cooling Capacity (BTU/h at Room Temperature):	<input type="text"/>

2. Select a proper cooling system for your installation

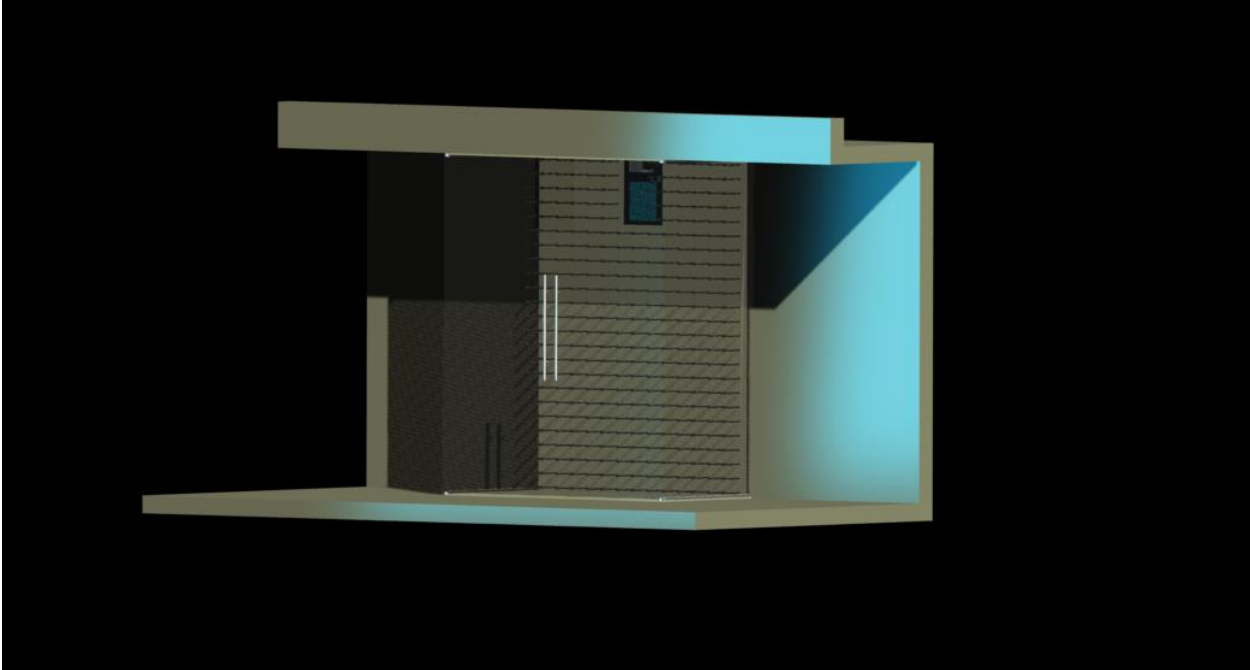
(1) A self-contained ducted cooling system mounted above the ceiling for concealed and easy installation (WM-4510~8510hzd)



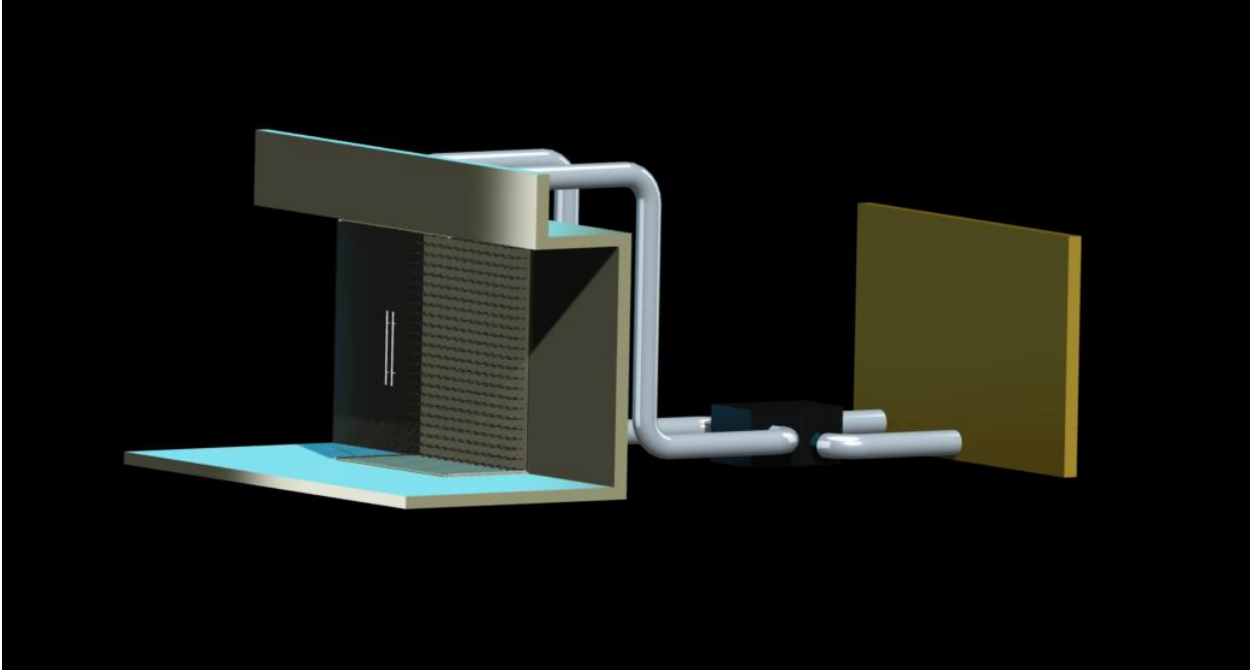
(2) A self-contained low-profile cooling system mounted on the ceiling for hidden and easy installation (WM-1500~2500LOWP)



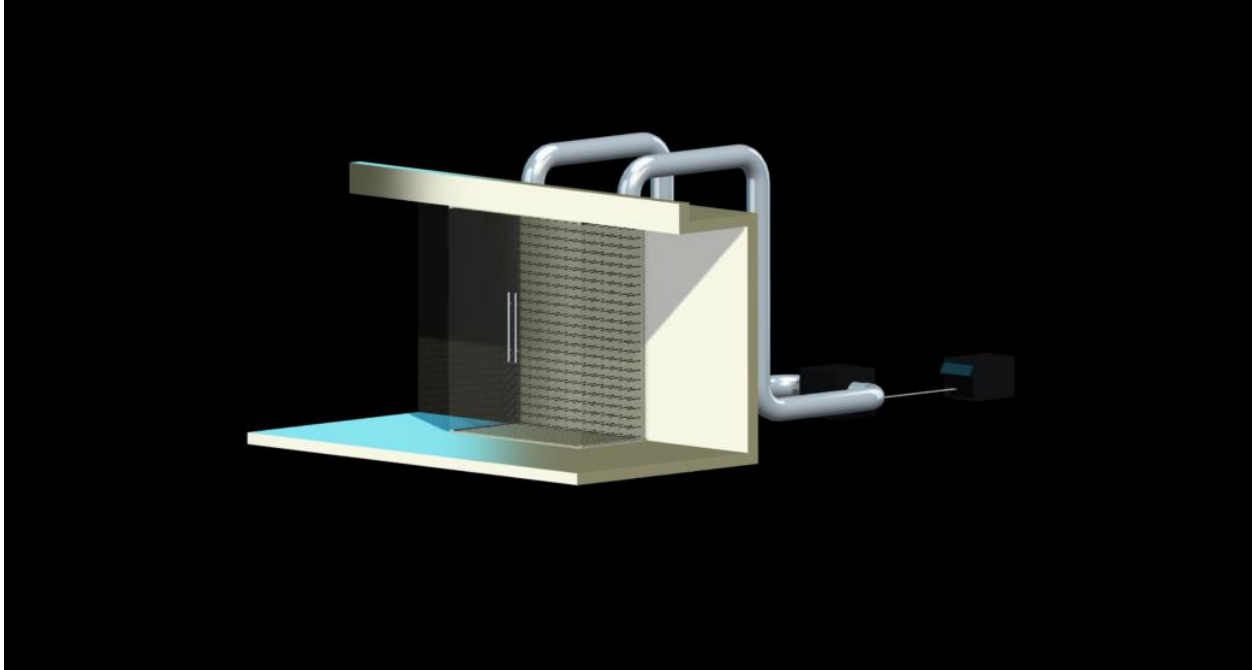
(3) A self-contained through-wall cooling system mounted on the wall for flushed and easy installation (WM-1500~8500HZD)



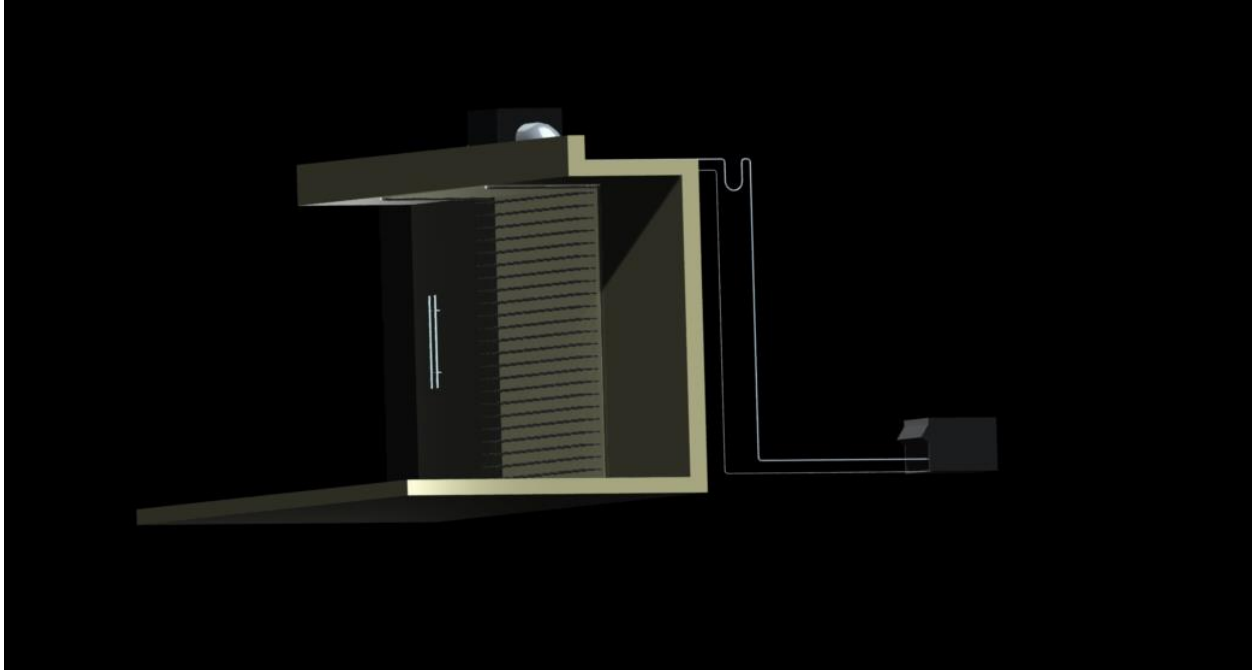
(4) A packaged central-ducted cooling system mounted anywhere available (floor, ceiling or attic) for concealed, quiet and easy installation (WM-4500~12030DS)



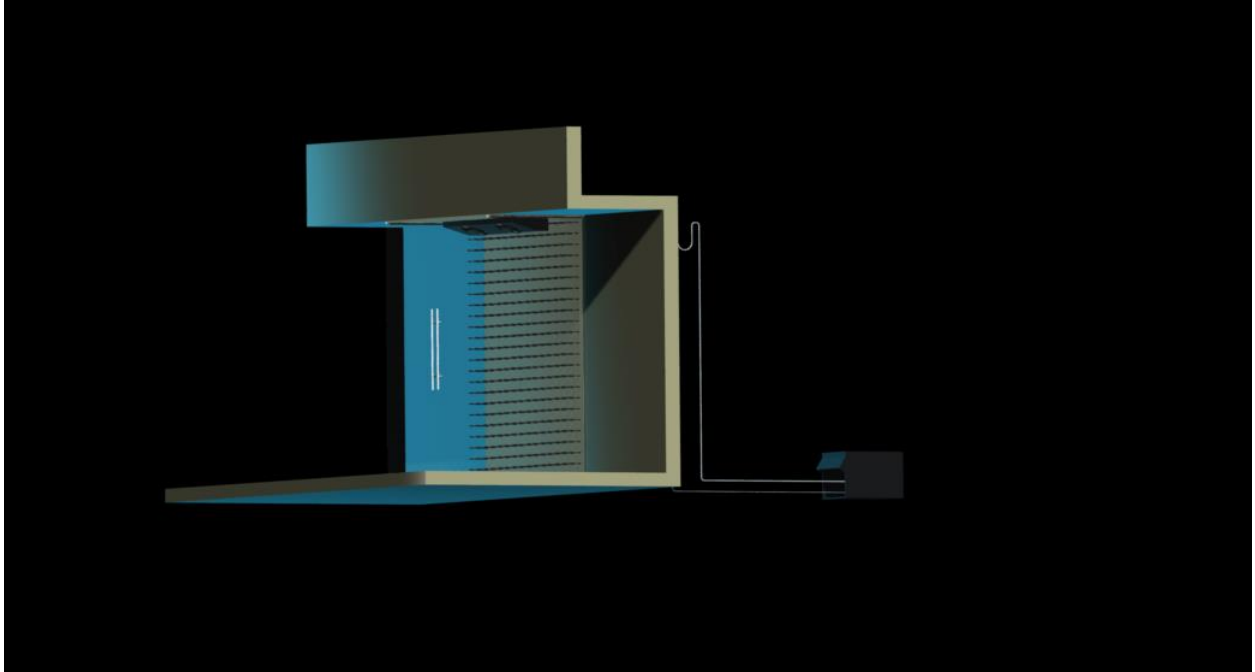
(5) A split central-ducted cooling system mounted remotely anywhere available (floor, ceiling or attic) for concealed, quiet and flexible installation (WM-2500~12000SSH)



(6) A split central-ducted cooling system mounted above the ceiling for concealed and quiet installation (WM-2500~12000SSH)



(7) A split low-profile cooling system mounted on the ceiling for hidden and inexpensive installation (WM-1500~8500SSL)



(8) A split through-ceiling cooling system mounted above the ceiling for concealed and quiet installation (WM-1500~4500SSO)

