

## Troubleshooting(VT200)

tools



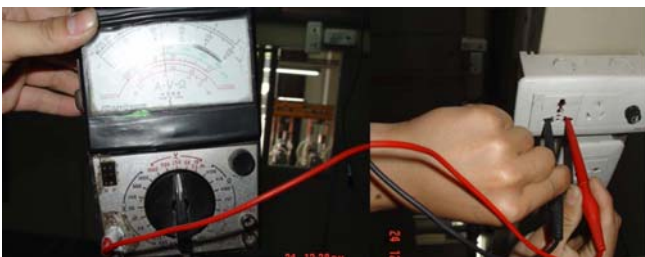
( Note: Most of the repairing is same as VT60's, so we use VT60's picture )

1、 the wine cellar does not get cold at all.

1-1、 Check to ensure the power plug is installed properly. If not connect the power or loosen, please connect it properly. (see the following picture)



1-2、 Check the voltage in the socket. See following.



The voltage should be around 115V in the socket.

1-3、 please replace it as follows:

1-3-1、 Take off the screws on the back panel.



1-3-2、 Take off the back panel.



1-3-3、 When powered, when you feel by hand,the compressor has slight vibration.If in this case, it is in normal. Ohterwise, should replace control board. The replacing method,see follows:

1-3-3-1、 Take off the screws on the control board cover



1-3-3-2、 Remove the screws on the main control board, replacing the control board.



1-3-3-3、 Powered, check the compressor working status.

1-4、 Check whether there is a leakage in the refrigeration system

After the power has been on for some time, the display of the temperature is accordance with the ambient temperature. There is no change of the temperature in the cabinet.

(The replacing method same as VT60,so we use the same picture as VT60)



1-4-1、 Take off the power plug.



1-4-2、 Take off the screws on the back panel.



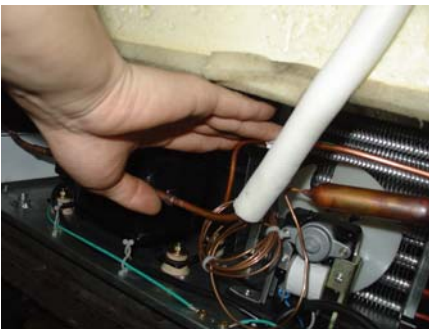
1-4-3、 Take off the back panel.



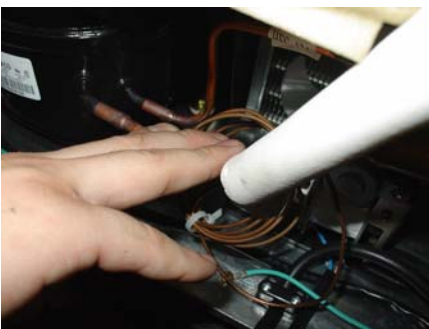
1-4-4、 If compressor is shaking when you touch it by hand, it shows the compressor is working.



1-4-5、 If exhaust pipe isn't hot when you touch it by hand after compressor running a period of time,



1-4-6、 The intake pipe isn't cool when you touch it by hand



1-4-7、 Then we can say machine has the problem of System Leakage. (Below is the repairing)

1-4-7-1、 Cut off the process tube



1-4-7-2、 Take off the process tube



1-4-7-3、 Replace it with a new process tube



1-4-7-4、 Fix the process tube by welding.



1-4-7-5、 Install the vacuumizing connector onto the process tube.



1-4-7-6、 Charge nitrogen. Connect the dried Nitrogen with the pressure is 1Mpa to the process tube



1-4-7-7、 Cover the welding point with towel that is soaked with soapsuds. If there is bubbles it means there is seam



1-4-7-8、 Re-weld the parts at which there are seams



1-4-7-9、 Test with towel while charging Nitrogen until there are no bubbles.



1-4-7-10、 Connect the vacuum pump with the processing tube and then vacuumize for more than 20 minutes.



1-4-7-11、 Connect the vacuum pump with canned bottle and then vacuumize for about 5minutes.



1-4-7-12、 Weigh the canned bottle.



1-4-7-13、 Charge the refrigerant into the canned bottle,



1-4-7-14、 Weigh the canned bottle after charging.



1-4-7-15、 Connect the canned bottle with the process tube and then compressor work for more than 5 minutes,

charge the refrigerant into compressor



1-4-7-16、 Weigh the canned bottle to check whether the refrigerant were charged completely



1-4-7-17、 Clamp the process tube and make it flat, and seal it after ensuring no leakage of the gas.





1-4-7-18、 Connect the refrigeration system to power and check whether there is any problem and then fix the back panel



The wine cellar is not cooling enough.

2-1、 Avoid the cellar under direct sunlight or adjacent to heat source.

2-2、 The illustration shows that the over high of the inner temperature for the long time shining of the light.

2-3、 Ensure the good ventilation around the cellar.

2-4、 Check whether the door is not closed firmly or whether the door has been opened for too long time.



2-5、 Check and ensure the door gasket is good enough.



2-6、 Check the fan motor.



2-6-1、 Take off the screws on the back panel.



2-6-2、 Take off the back panel.

If the fan motor is not running when the compressor is working, please repair it as following steps:

2-6-2-1、 Take off the fixing screws on the fan motor.



2-6-2-2、 Take out the fan motor. And take off the terminals on the fan motor, Replace a new fan motor.



2-6-2-3、 Powered and ceheck the fan working status. If ok, recover the back plate.

3、 The cellar is too noisy.

3-1、 Make certain the cellar is properly leveled and standing firmly.

You may adjust the leveling legs to keep it level.

3-2、 Make sure the pipelines un-touching each other.

4、 The light is not on when the machine connected to the power.

Check the light switch to see if ON

4-1、 Check and ensure the light tightned enough. If the bulb is wrong please replace it as follows:



4-1-1、 Removing the power plug from the outlet.



4-1-2、 Replace the starter ,powered and then check light is ON once more

4-1-3、 Check if the ballast damaged



4-1-4、 Take out the racks.



4-1-5、 Take off the light cover by taking off the screws on it.



4-1-6、 Rotate the light clockwise or unclockwise 90° and then take out



4-1-7 Connect the multi meter with the two terminals of the light. Check light resistance. If the resistance is 0, the light is damaged .Otherwise the light is ok. .

( Attention, Two terminals should be measured )

If the light is damaged, replace it.( The light should be 15W)

4-1-8、 Connect the power, the light is on and then disconnect the power

4-1-9、 Fix the light cover.

5、 “ER” showed on LED indicator

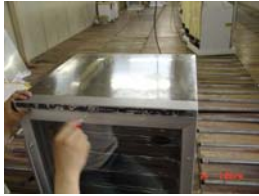


As above, “ER” showed on the LED indicator, the terminal is not connected well or the thermal resistor is damaged.

5-1、 The repair steps for the terminal is as follows:



5-1-1、 Take off the PVC cover of the plastic panel.



5-1-2、 Take off the screws on the cover.



5-1-3、 Take off the two screws on the display board.



5-1-4、 Take off the plastic panel.



5-1-5、 Pull out the display board.



5-1-6、 Pull out the terminal of the display board.



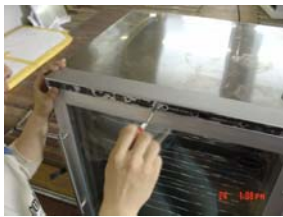
5-1-7、 Cut out the terminal according to the picture.



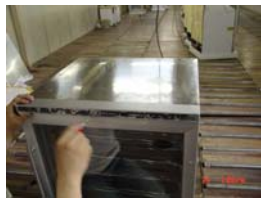
5-1-8、 Reconnect a new terminal, and tie it up with rubberized fabric.



5-1-9、 Connect the terminal.



5-1-10、 Fix the screws on the display board.



5-1-11、 Fix the screws.



5-1-12、 Recover the PVC cover of the plastic panel.

5-2、 The repair steps are as follows if the thermal resistor is damaged.



5-2-1、 Take out all the racks in the cabinet.



5-2-2、 Take off the four screws on the evaporating board.



5-2-3、 Remove the evaporating board as above.



5-2-4、 Take off the screws of the thermal resistor.





5-2-5 Take out the connecting cord and replace the new resistance.



5-2-6、 Fix the new thermal resistor.



5-2-7、 Fix the evaporating board.

5-2-8、 Put the racks in and then close the door.

6、 “LL” shows on the LED indicator.



6-1、 “LL” shows on the LED indicator that means the temperature is too low in the cabinet. The circuit is out of control, please replace the control board, the steps are as follows:

6-1-1、 Take off the screws on the back panel.



6-1-2、 Take off the back panel.



6-1-3、 Take off the screws of the control board cover (according to the picture)



6-1-4、 Take off the screws of the control board.



6-1-5、 Take off the upper cover of the control board.



6-1-6、 Pull out the terminal on the control board.



6-1-7、 Take off the screws of the control board.



6-1-8、 Replace the control board with a new one.



6-1-9、 Fix the screws on the control board.



6-1-10、 Connect the terminal of the control board.



6-1-11、 Put on the control board cover.



6-1-12、 Fix the cover of the control board.

7、 “HH” shows on the LED indicator



“HH” shows on the LED indicator, the temperature in the cabinet is too high; the cellar does not get cold at all: the refrigerating system got trouble.

8、 Unavailable letters showson the LED indicator, the indicator should be replaced. Please do as follows:



8-1、 Take off the PVC cover.



8-2、 Take off the screws on the plastic panel.



8-3、 Take off the two screws on the indicator board.



8-4、 Take off the plastic panel cover.



8-5、 Pull out the indicator board.



8-6、 Pull out the terminal of the indicator board.



8-7、 Replace it with a new one, then plug the terminal.



8-8、 Fix the indicator board.



8-9、 Fix the plastic panel cover.



8-10、 Stick the PVC cover on.