



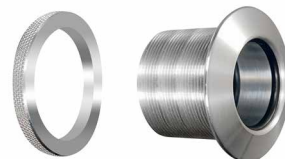
A PROUD HERITAGE OF EXPERIENCE AND QUALITY

BOTTLE BING INSTALLATION INSTRUCTIONS

To install the bottle bing, please follow the below instructions:

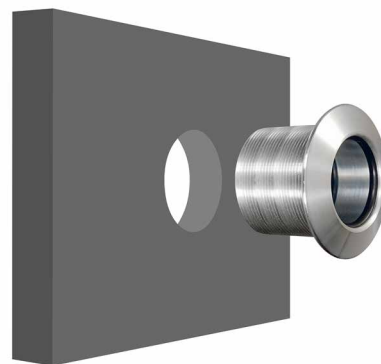
Step 1:

Separate the ring (screw/unscrew) from the main part (body) of the bottle bing.



Step 2:

Insert the body into the panel.



Step 3:

Use the ring and secure the back of the panel until it is tight.

